

13.- Rigging gear inspection (removal criteria)

Rigging Gear Inspection

Removal Criteria for Wire Rope and Wire Rope Slings



Kinks, crushing,
or unstranding



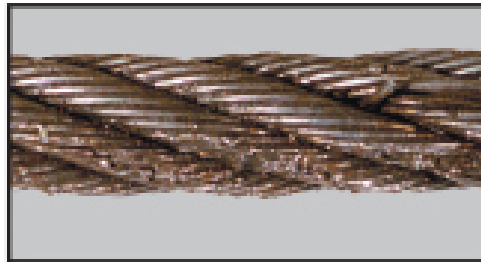
Birdcaging



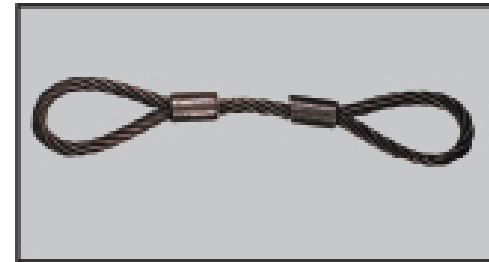
Distorted rope structure



Broken wires
(check standards)



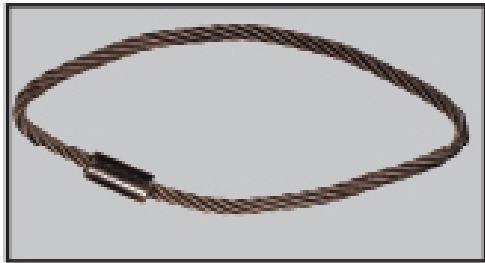
Corrosion or
Heat damage



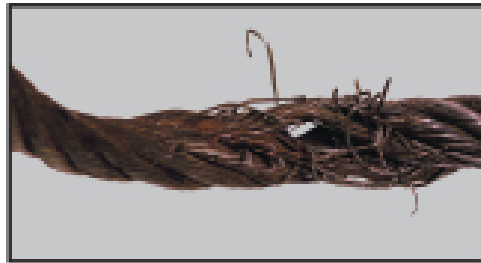
Eye / Eye slings:
Min. of 10 dia. Between
Sleeves or splices

Rigging Gear Inspection

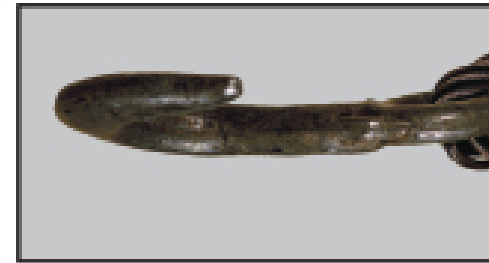
Removal Criteria for Wire Rope and Wire Rope Slings



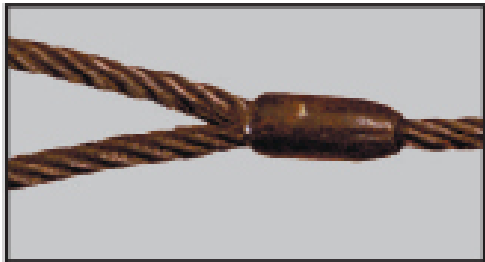
Grommet slings:
Min. of 96 dia, in the
Sling's circumference



Severe wear of
Outside wires



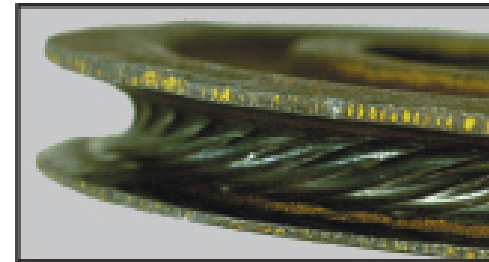
Hook spread or twist



Missing or illegible
Sling identification



Core damage



Sheaves with worn
bearings, cracked spoke,
rim wear, depth wear,
or corrugation

Rigging Gear Inspection

Removal Criteria for Web Slings and Roundslings



Heat damage or melting



Chemical damage



Ultraviolet ray damage
or severe abrasion
to web



Worn or broken stitching



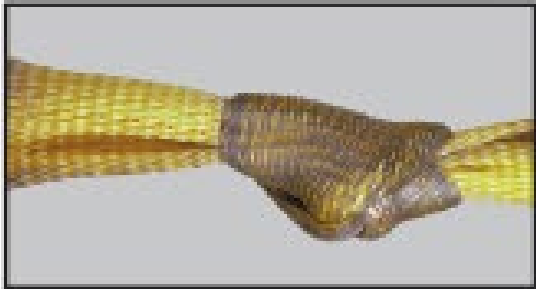
Distortion of fittings



Any holes, cuts, tears,
snags, or punctures

Rigging Gear Inspection

Removal Criteria for Web Slings and Roundslings



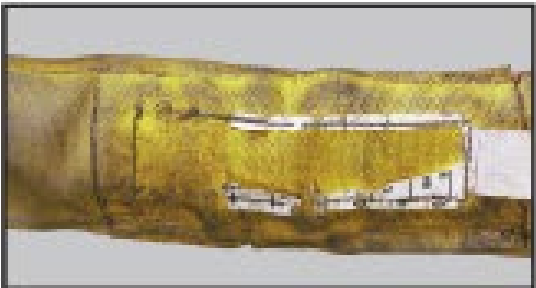
Crushing or sling
body knots



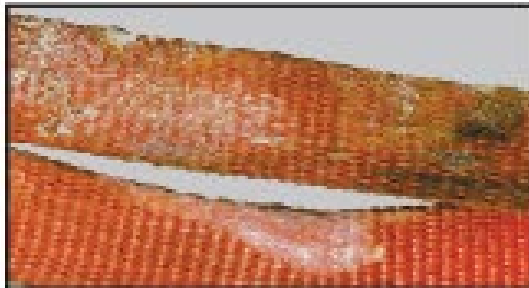
Cuts, snags, or
punctures which
exposes core yarns



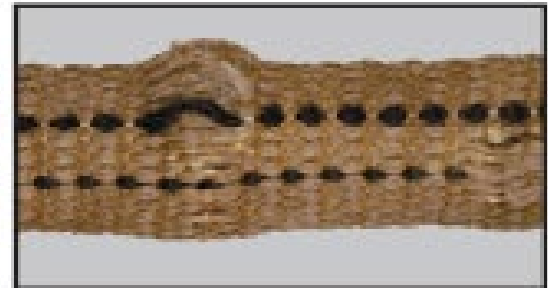
Hook spread or twist



Missing or illegible
Sling identification



Sling impacted with
foreign material



Roundslings with
broken or crushed
core yarns

Rigging Gear Inspection

Removal Criteria for Alloy Steel Chain Slings



Heat damage,
heat > 1000°F



Bent, twisted,
or cracked links



Broken welds
or components



Non-hinging components



Severe corrosion or pitting



Elongation of links
or components



Rigging Gear Inspection

Removal Criteria for Alloy Steel Chain Slings



Bent, twisted, or cracked master links or couplers



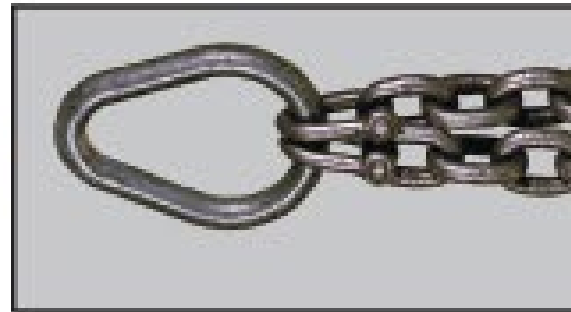
Links or attachments with severe wear, nicks, or gouges



Non-working latches



Hook spread or twist



Missing or illegible sling identification



Makeshift links or fasteners

Rigging Gear Inspection

Removal Criteria for Rigging Hardware and Below-The-Hook Lifting Devices



Missing or illegible identification



Structural deformation



Cracks or broken welds



Severe metal loss



Hole distortion



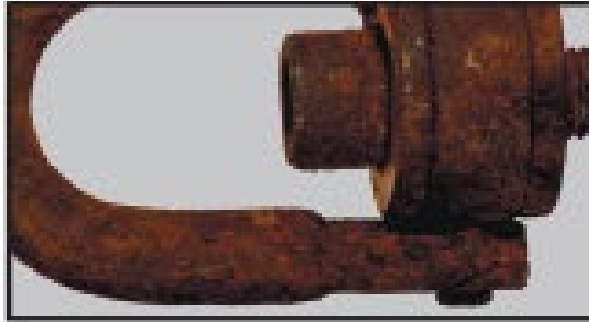
Damaged threads

Rigging Gear Inspection

Removal Criteria for Rigging Hardware and Below-The-Hook Lifting Devices



Heat damage or
weld splatter



Severe corrosion or pitting



Component hingeability



Substandard components
and/or repairs



Loose or missing
guards, fasteners,
covers, or nameplates



Cracked or worn pulleys,
sheaves, sprockets,
bearings, chains, belts,
or linkages